

WARDEAN
COLLEGE
BRIGHTON & HOVE



2010
PROSPECTUS

WARDEAN COLLEGE
BRIGHTON & HOVE
DIPLOMA
ACCESS
TO
HEALTH
AND
SOCIAL
CARE
PROFESSIONS



INTRODUCTION

What is an Access to Higher Education Diploma?

The Access to Higher Education (HE) Diploma is a qualification which prepares you for study at university. It is designed for people who would like to study in Higher Education but who left school without the usual qualifications, such as A levels. Often these students have valuable life experience and work experience that enables them to go on to succeed at university and beyond, with a large number pursuing new careers and seeing changes in their lives that they had never thought possible.

What does an Access to Higher Education Diploma involve?

The emphasis will be on teaching you the relevant study skills that you will need to be a successful student at university. For each unit successfully completed, you will gain credits that gradually build towards the 60 credits that are required for the Access to HE Diploma. Varndean College offers three Access to HE Diplomas (listed in the panel opposite) which start in mid September and are completed by the end of June each year.

Do I need to have studied recently?

One of the key features of Access to HE Diploma courses is that you are not required to have any particular previous qualifications to start - and it does not matter how long it is since you last studied. An Access to HE Diploma course will help you to develop the knowledge, skills and confidence you need to prepare you for university.

Most of our students have not studied for some time and we understand that it is a big step to return to the classroom. At Varndean College, our tutors are very experienced at working with adults with a wide range of educational, life and work experience and take this into account in their teaching; you won't be 'thrown in at the deep end' or tested on things which you forgot years ago. However, you can expect the course to be challenging. The whole purpose of an Access to HE Diploma course is to help you to be successful and to equip you with the academic requirements for a university course.

Daytime Courses

Access to Science and Health Related Professions

Tues/Weds/Thurs

Access to Social Science and Public Sector Professions

Mon/Tues

Evening Course

Access to Humanities and Social Sciences

Mon/Tues eves and 7
Saturdays throughout
the year



How do I know which university to apply to?

Varndean College organise tutorial and careers support to help you to decide which course and which university would be best for you. University of Brighton organise an Open Day specifically for Access students each September, although it is never too soon to begin to investigate suitable options for you as universities are happy to provide information.

Do universities recognise the Access to HE Diploma?

Each year, around 20,000 Access to HE students apply to universities across the UK. What's more, the framework for the approval of Access to HE courses is managed by the universities' own quality assurance organisation, the Quality Assurance Agency for Higher Education (QAA). A course which is recognised through this framework is permitted to use the Access to HE logo (shown below) and this also appears on the actual diplomas which are awarded to students.

Varndean College is a well established provider of Access to HE Diploma courses and well regarded by local universities.

Typically our students progress to the local Universities of Sussex and Brighton, but the Diploma is nationally recognised by UCAS.



COURSES ON OFFER

Daytime Courses

Access to Science and Health Related Professions	Tues	9am-4pm
	Wed	9am-3pm
	Thurs	9am-4pm

Access to Social Science and Public Sector Professions	Mon	9am-4pm
	Tues	9am-4pm

Evening Course

Access to Humanities and Social Sciences	Mon	6pm-9pm
	Tues	6pm-9pm
	+ 7 Saturday workshops throughout the year, 10am-3pm	

Additional Courses to complement Access to HE Diplomas

GCSE qualifications are included among the entry requirements for certain HE courses. It is very important that you find out the required qualifications for the HE course that you are interested in studying on completion of your Access to HE Diploma to avoid disappointment. Varndean College offer GCSE courses for mature students as part of the Adult Education Programme. GCSE courses in English, Maths and Science will start in September 2010. Please refer to the Adult Education Programme pages further on in this prospectus.

Varndean College Access to HE Diplomas also include GCSE English Equivalence Units approved by OCNSER. Whilst HE Institutions recognise and accept the English Equivalence Award, there may be a few courses that have specific entry requirements, including GCSE qualifications. It is important therefore for you to check with the relevant HE Admissions Tutor for details.

Work Experience

Many of our applicants to the Access to HE Diploma already have some valuable experience and skills from previous employment. Some HE courses will look favourably on applicants with relevant work experience for their future career choice, specifically teaching courses. Varndean College has a Careers Department who will be able to help and advise you.

ACCESS TO SCIENCE AND HEALTH RELATED PROFESSIONS

Daytimes

Tues 9am-4pm

Wed 9am-3pm

Thurs 9am-4pm

This course is popular for adults who have a vocational route in mind and need science qualifications to gain entry to the relevant course in HE. The course team offer a supportive environment for learners who may have not studied science since school. This course is primarily based around Biology (approx 50%), although it also offers foundation principles of Chemistry (20%), Mathematics and Information Technology. For learners to be successful on this course, basic maths skills are required and if you do not have a Level 2 qualification in Maths, we will offer you advice at interview.



Term one

The first term's work is designed for learners who are returning to academic study for a range of reasons. The focus of the following units therefore is designed to offer you an introduction to Foundation Biology; Foundation Chemistry; Human Physiology; Mathematics and IT. Topics you will study in term one include:

- Cell structure
- Biological molecules
- Atomic structure
- Chemical bonding
- Global warming
- The heart and circulation
- Breathing and gas exchange

You will also receive tutorial help and guidance with your application to university.

Term two

The second term encourages the development of independent learning and the study skills necessary for success in HE through the focus of the topic 'Science in Society' - you will study the impact of scientific research in the fields of Biology and Chemistry on our lives through topics such as DNA technology and the impact of human activity on our environment. Human Physiology, Mathematics and IT also continue this term.

Topics studied in term two include:

- DNA structure and genetic control
- Genetic engineering
- Inheritance
- Organic chemistry
- Energy and fuels
- Nutrition
- Co-ordination and control

Tutorial sessions focus on interview skills and preparation for university, as well as extra support and development of individual study skills.



Term three

The third term offers you the opportunity to practice your academic skills through an independent research topic and presentation of your findings. Tutors will supervise you and support your choice of research project.

Assessment

The assessment reflects the skills that you will need at university so will be a combination of essay writing, report writing, end of unit tests and coursework assignments. You will work in pairs and sometimes groups. You will be encouraged to feedback and present your ideas to the class group.

Progression to university

This course prepares you for a very wide range of both science and vocational courses. The following list reflects the destinations chosen by students in previous years:

- Sports Science
- Nursing
- Physiotherapy
- Biochemistry
- Teaching
- Podiatry
- Environmental Science
- Dental Nursing
- Occupational Therapy
- Nutritional Science
- Forensic Science
- Midwifery
- Botany



Quotes from past and present students

"I chose to do an Access course so that I can apply to university, as well as gain a knowledge and understanding of the environment"

Caroline Tafira

"I chose Vardean to follow a Science based Access course as the one here was the most in-depth, involved and varied. I thought this would give me the best foundation for going on to university and my chosen career. The encouragement I have received from my tutors has been what I have enjoyed most."

Essie Beer-Pearce



"I studied Chemistry to complement my existing Biology qualification and give me a greater understanding of the interaction between the two subjects. I chose Vardean as it provided all the necessary science background required to apply to university."

Maria Kistruck

"I'm glad I did an Access course and not distant learning. The tutors were really good and helped me do well. I'm planning to study Dental Hygiene in London." **Lucy Dickens**

Additional support

is available to all students on a drop in basis on Tuesdays after lessons offering group study skills sessions, individual support or simply a chance to check out that you are on the right lines for the assignment assessment criteria.

ACCESS TO SOCIAL SCIENCE & PUBLIC SECTOR PROFESSIONS

Daytimes

Mon 9am-4pm

Tues 9am-4pm

This course is popular with adults who have vocational aspirations to work in the Public Sector Professions or who have already had some work experience in the Public Sector and need to gain HE qualifications to improve or change their career/employment prospects. The course is also suitable for adults whose interests have matured and thus wish to study at a higher level. Learners are offered opportunities to engage in topical and academic debate concerning a range of Social Science and Humanities subjects and issues. The emphasis is on teaching you the relevant study skills you will need to be a successful student at university.

Term one

The first term's work is designed for learners who are to academic study yet have some useful transferable life skills and work experience. You will investigate academic research in relation to social issues such as poverty, inequality and mental health.

- The History unit will offer opportunities to discuss different representations of poverty in the 19th and 20th centuries and how successive governments define poverty.
- The Sociology unit will focus on inequality in society and different theoretical perspectives and explanations of why people have such different life chances.
- The Psychology unit will investigate how mental health is defined and treated.
- The Study Skills unit will introduce and offer opportunities to practice note taking skills, critical reading skills, essay writing and research skills. There is an emphasis on reflective learning that will differentiate between the learners existing skills and experience.
- Tutorial will focus on support and guidance with university applications.
- IT skills and development to level 2.

Term two

The second term encourages the development of independent learning and study skills for HE through the following units:

- The History unit investigates the changing role of women, in particular how the Industrial Revolution affected home and work.
- The Sociology unit will study the theoretical explanations of social class.
- The Psychology unit will look at how society influences our behaviour.
- Study skills will focus on the appropriate interpersonal skills required as a university student.
- Tutorial help for university interviews is available and IT skills continue.



Term three

The third term offers you the opportunity to practice your academic skills through an independent Psychology research topic and your Study Skills tutor will help you prepare a seminar presentation about your research work in progress. Tutors will supervise you and support your choice of research project. You will also write essays on a popular protest movement in History and Crime and Deviance in Sociology.



Assessment

The assessment reflects the skills that you will need at university so will be a combination of individual essay writing, pre-pared timed essays, research tasks, presentations and group work. Each unit is assessed and you will build up a credit profile.

Additional support is available to all students on a drop in basis on Mondays after lessons offering group study skills sessions, individual support or simply a chance to check out that you are on the right lines for the assignment assessment criteria.

Progression to university

The following list reflects the destinations chosen by students in previous years:

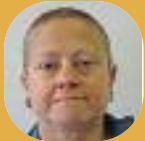
- History
- Sociology
- Social Policy
- Politics
- Teaching
- International Relations
- Development Studies
- Psychology
- Archaeology
- Anthropology
- Social Work
- Cultural Studies

Quotes from past and present students

"An Access course will give me the academic skills at the right level to cope with university and it has enabled me to meet other mature students with similar positions and goals as myself. I am finding the course fulfilling and motivating, and my confidence and self-esteem are increasing." **Zora MacDonald**

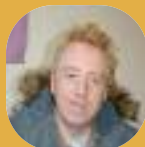


"Varndean has the best run Access course. I have enjoyed learning how to write critically and debate in class - skills I will need at university. I am hoping to study History and Politics at Sussex University." **Corinne Hyatt**



"I have found this Access course to be consistently challenging and it has given me the confidence and skills to cope at university. The tutors have been inspiring and it feels as though I have been stretched to the limit - and yet I want to go further."

Eamonn Duff



ACCESS TO HUMANITIES AND SOCIAL SCIENCES

Evenings

Mon 6pm-9pm

Tues 6pm-9pm

Plus 7 Saturdays 10am-3pm

This course offers students the opportunity to return to learn but who can not attend lessons during the day. Designed to offer a broad range of learning opportunities for progression to degree level study in Humanities and Social Sciences, this course is particularly popular with those who want to improve their employment prospects in the future, yet do not have the relevant qualifications to study at university.

Learners are offered opportunities to engage in topical and academic debate concerning a range of Social Science and Humanities subjects and issues. The emphasis is on teaching you the relevant study skills you will need to be a successful student at university.

Term one

The focus of the first term is the acquisition and practice of the relevant Study Skills for academic study at university. You will also receive tutorial support and guidance with university applications.

- The Study Skills unit within the context of Cultural Studies will introduce and offer opportunities to practice note taking skills, critical reading skills, essay writing and research skills. There is an emphasis on reflective learning that will differentiate between the learners existing skills and experience.
- The History unit will offer opportunities to discuss different representations of poverty in the 19th and 20th centuries and how successive governments define poverty. Emphasis will be to support learners in their application of academic skills.

Term two

The second term encourages the development of independent learning and study skills for HE through the following units:

- The Development Studies unit introduces you to the Social Sciences and Humanities debate about some key issues and ideas relating to world development. This provides an ideal opportunity for you to develop and practice further the academic study skills from the first term's units. The concepts of globalisation and sustainability will be studied and in particular current debates concerning global equity in terms of quality of life.
- The Cultural Studies unit will focus on visual culture, media and society. You will be introduced to the interdisciplinary nature of the study of culture, the relationship between culture and society and the impact on social identities. There will be an opportunity to explore the role of the media and communication in the circulation of dominant ideas in society.



Term three

The focus of this last term is the Independent Research Project. You are supported through the process of selecting and narrowing down the focus of a topic, undertaking a literature review and selecting appropriate research methods for the project. You will choose a topic introduced by the course units that they choose to investigate further. There may be a development, cultural, visual or media issue that you want to research in greater depth. You will also be offered the opportunity to discuss your research in a seminar with fellow learners.

Assessment

The assessment reflects the skills that you will need at university so will be a combination of individual essay writing, pre-prepared timed essays, research tasks, presentations and group work. Each unit is assessed and you will build up a credit profile.

Progression to university

The following list reflects the destinations chosen by students in previous years:

- History
- Social Policy
- Politics
- Anthropology
- Cultural Studies
- Religious Studies
- Sociology
- International Relations
- Development Studies
- Teaching
- Geography
- Social Sciences



Additional support

is available to all students on a drop in basis offering group study skills sessions, individual support or simply a chance to check out that you are on the right lines for the assignment assessment criteria.

Quotes from past and present students

"The experience and knowledge I took away from the Access course have been vital to my future. Varndean is a welcoming site with amazing teaching staff. I would highly recommend the course to anyone, especially those who have been out of education for a while. It is an essential foundation for studying at university and without it I wouldn't be where I am today."

"It has made me realise that I have still got a brain that works after all these years and has opened up new roads for me to travel down that I thought were closed."

"My objective was to see if I could cope with work, family and returning to education. The structure of the course enables disciplined students to juggle these various aspects."

"Our recent study trip to the Mass Observation Archive was utterly fascinating. There was a great sense of nostalgia for the past. We were able to handle un-edited raw material and people's accounts."

ADULT EDUCATION PROGRAMME AUTUMN 2010

GCSE ENGLISH

This course provides an excellent opportunity to gain a good grade in English. You will develop your understanding of how texts are written to produce their effect on the reader, and study a range of fiction and non-fiction, including a Shakespeare play, media texts, poetry and short stories. The course is assessed by coursework including creative writing and examination. Speaking and listening skills are also included.

GCSE MATHS

This course is particularly suitable for mature students who need to obtain GCSE Maths for entry to teacher training or other university courses. The course consists of 3 modules: Statistics, Number and Core Mathematics, which are assessed by means of examinations in November, March and June. With friendly, approachable and experienced staff, students get plenty of support and encouragement to succeed.

GCSE SCIENCE

This course is suitable for mature students who need GCSE Science for entry to a qualification like teacher training. The course, which follows the AQA core science B specification, consists of three subjects; Biology, Chemistry and Physics. Assessment consists of 25% practical ISA in one of the subjects taken in March and 75% written examinations in all three subjects taken in June.

Course Tuition Fees: £205 per course (to be reviewed for Sept 2010)
plus £28.50 examination fee (to be reviewed for Sept 2010)



RECENT STUDENT FEEDBACK

- "I have found this Access course consistently challenging and it has given me the confidence and skills to cope at university."
- "The tutors have been inspiring and supportive."
- "I was really scared when I first started the course, but received such a welcome that I felt comfortable in the class by the end of the first week."
- "I have enjoyed the group discussions and the friendliness of the teachers and other students."
- "The course has helped me to rebuild my confidence and abilities."
- "I wanted to see if I could cope with work, family and returning to education."
- "It has made me realise that I have still got a brain that works after all these years."

A recent college survey indicated that 100% of students would recommend an Access course to other people.



FACILITIES AND SERVICES



- ICT classes and use of the College's ICT facilities
- Services of Additional Support if needed (see separate page)
- Library facilities (over 15,000 books, as well as CDs and videos)
- Tutorial guidance
- Membership of student union, clubs and societies (ie Politics, Media etc)
- Study Skills programme
- All lessons taught by the college's team of full-time staff
- Superb location on outskirts of Brighton with magnificent views, easy parking, and a green spacious campus



ADDITIONAL SUPPORT

Returning to study can be daunting!

At Varndean College we are committed to student support

Additional Support can help Access students to:

- Manage workloads
- Develop and use revision techniques
- Balance work/college/family commitments
- Gain confidence with study
- Structure essays
- Develop study skills
- Complete homework

We provide:

- Dedicated sessions for Access students
- Daytime 1:1 support
- Use of General Sessions (8.40am–2.10pm)
- Assessments for exam concessions
- Loan of IT equipment (laptops, dictaphones) subject to availability
- Assistive technology
- A quiet working environment

The Additional Support team can be contacted on:

Tel: 01273 508011, Ext 223

[www.varndean.ac.uk/Additional Support](http://www.varndean.ac.uk/Additional%20Support)



"I have found Additional Support to be invaluable. I enjoy coming because everyone is really friendly, helpful and welcoming. It is a calm, relaxed, working environment where I always feel listened to."

Owen Dine

Humanities and Social Sciences course

College Disability Statement

The College is committed to ensuring that disabled people including those with learning difficulties are treated fairly. All reasonable adjustments to provision will be made to ensure that disabled students and other disabled people are not substantially disadvantaged.

OPEN AFTERNOONS

You are invited to come along to an informal session to find out more about the courses on offer and what is involved.

**TUESDAY 20 APRIL
4.30pm**

**WEDNESDAY 28 APRIL
2.30pm**

(aimed specifically for those wishing to follow the Science & Health Related Professions Course)

**MONDAY 17 MAY
4.30pm**

**MONDAY 14 JUNE
5.30pm**



Please arrive prompt at the start, as the session will begin with tea/coffee on arrival, followed by

- A presentation**
- Open question/answer session with staff and students**
- Tour of the college**
- A chance to get further individual advice**

HOW TO APPLY

A waiting list for Access Courses can occur, so early application is advisable.

To make an application to study on one of the Access courses, you should follow the process outlined below:-

STAGE 1 : GATHERING INFORMATION

Either: come along to one of our Open Afternoons (20 April, 28 April (Science only), 17 May or 14 June (see opposite page for details) for the opportunity to talk to staff and students and find out more about the courses on offer

Or: having read the information in this booklet, choose which course is the most relevant for your needs in preparation to study at university

STAGE 2 : YOUR APPLICATION

Complete an Application Form and write your letter of application to accompany your application form. Send them to: Amber Etherington, Admissions Co-ordinator, Varndean College, Surrenden Road, Brighton, BN1 6WQ

You will then receive a letter offering you an interview

STAGE 3 : YOUR INTERVIEW

At your interview you will be able to ask more questions and discuss with the Access Co-ordinator whether or not the Access Diploma to HE is the most appropriate route for you. You will be advised on what happens next.

STAGE 4 : NOTIFICATION OF OFFER

You will receive a letter from the college confirming your offer of a place and with details about the arrangements for the start of the course in mid September.

WE LOOK FORWARD TO WELCOMING YOU AT VARNDEAN COLLEGE

FEES AND FINANCIAL ASSISTANCE

Fees

Tuition fees for all Access courses are £795. This fee can be paid in 3 instalments if preferred, with an additional administration charge of £15. All students are also required to pay a £50 refundable deposit.

You may be entitled to fee remission if you are in receipt of one of the benefits listed on the application form. Alternatively you may be able to claim fee remission if you do not already have a full Level 2/3 qualification. Advice will be given at the interview stage of the application process. No student can be registered for a course unless evidence of means tested benefits is provided.

GCSE Maths, English or Science

Tuition fees are £205 per course (to be reviewed for Sept 2010).

Are childcare costs stopping you studying?

If so, a Government initiative 'Care to Learn' can help cover your childcare costs. Conditions apply, but generally, students under 20 can qualify for up to £5,000 childcare costs. Students over 20 can qualify for up to £4,000 childcare costs. This is means tested but help is available for those with a household income of less than £50,502.

Adult Learning Grant

A national Government pilot scheme taking the form of a weekly (means tested) payment of £10, £20 or £30. You must satisfy several conditions to be eligible:-

Age 19-30

Full time student (min of 12 hours per week)

Resident in UK for 3 years or have settled status

Not be in receipt of certain benefits, ie Income Support, Jobseekers Allowance, Incapacity Benefit

Your course must be your first Level 3 qualification (2 previous A levels would disqualify you).

More details on this at www.direct.gov.uk.

Please note that all figures and information are correct at the date of going to print.

For further details and application forms, contact Linda Bailey, Varndean College Welfare Adviser on 01273 546609 or email at lmb@varndean.ac.uk

HOW TO FIND US



By Train

Both Preston Park and London Road stations are approximately a 20 minute walk away from the College.

By Bus

The service 5B, 88 and 55 (peak times only) stop in Surrenden Road immediately outside the College entrance.

By Car

Unfortunately, due to limited space, the College car park is restricted to staff only. However, there is plenty of street parking available outside in Surrenden Road

VARNDEAN COLLEGE
SURRENDEN ROAD
BRIGHTON
EAST SUSSEX BN1 6WQ

For further information please contact
Amber Etherington, Admissions Co-ordinator
Tel: (01273) 546607
Email: ame@varndean.ac.uk

Jean Clark, Access Co-ordinator
Tel (01273) 508011, Ext 428
Email: jmc@varndean.ac.uk
www.varndean.ac.uk

